

Unidata - iBeta Level 2

Certification iBeta - key aspects

What is iBeta?

iBeta is a top testing lab for biometric systems. Their liveness check certificate means your system is great at telling real people from fake ones, making it super secure

Which companies are usually interested in that?

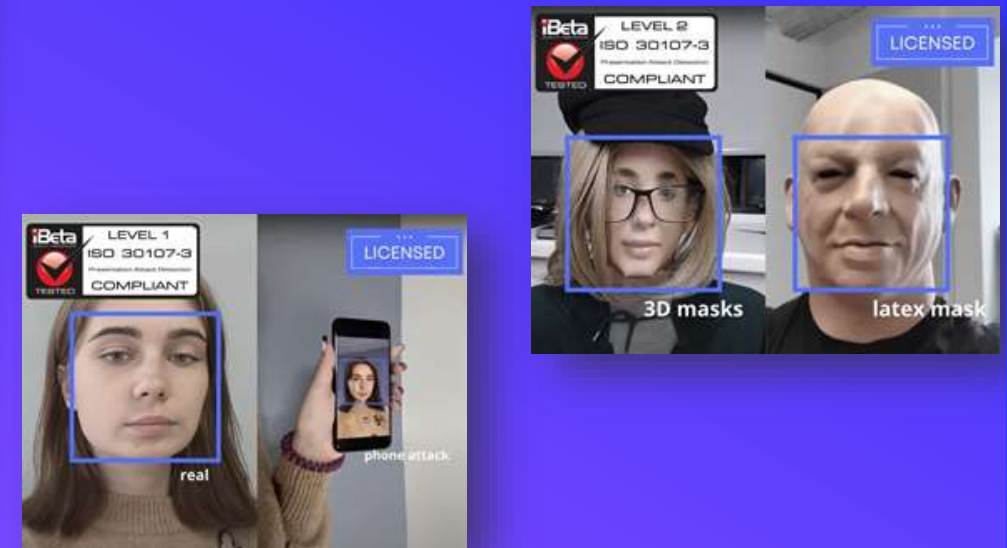
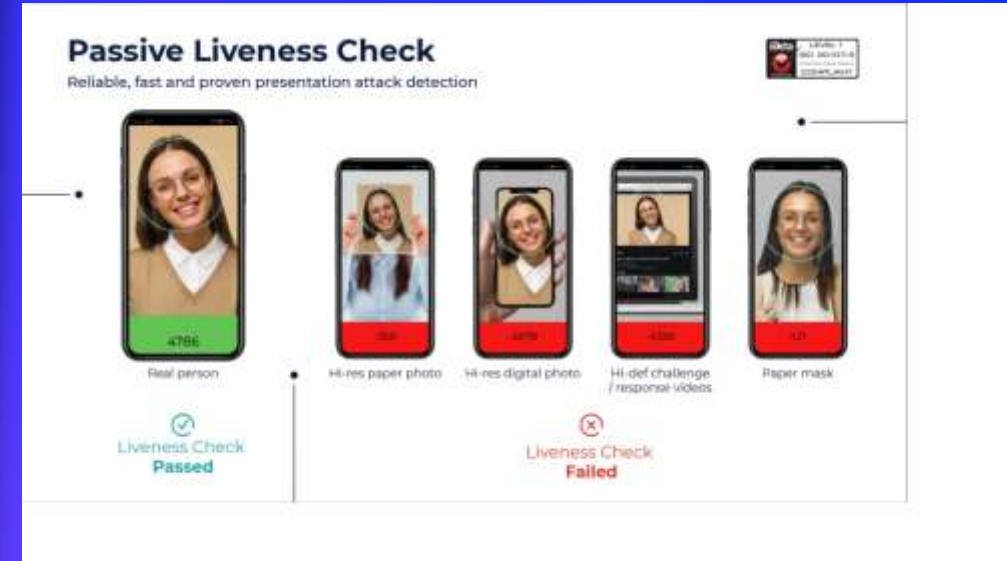
- Banks and FinTech
- Software developers and Tech
- Government agencies

How did we create those datasets?

We collected data according to iBeta lab and ISO standards. Our tech partner successfully passed both iBeta levels

Recent success story

The Asian fintech company certified at Level 1 in November using our data and is now progressing to Level 2



Types of attacks in the dataset for iBeta level 2



A Real Face with additional features

~6 300 videos



2D mask (Printed cutout, invisible attachment)

~1 300 videos



2D mask (with eyeholes, invisible attachment)

~1 600 videos



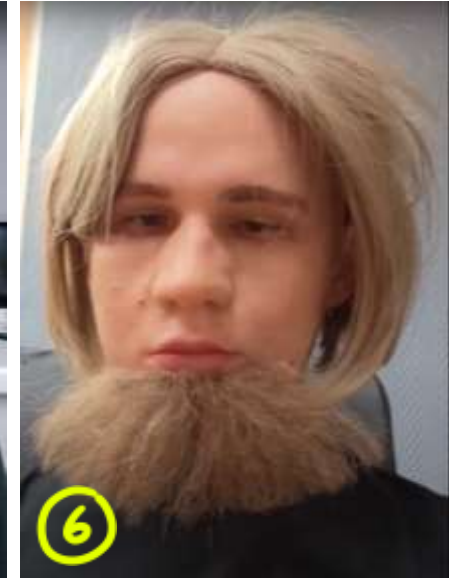
Latex Mask

~10 800 videos



Wrapped 3D cardboard mask around mannequin

~5 600 videos



Silicon Mask

~6 500 videos

All videos were shot in 9 different locations (with different backgrounds). The percentage of video overlap is not more than 5%. Number of people: 21 individuals (15 of them wearing silicone masks)

TOTAL: ~32,3k videos, 21 people and 31 attributes

ATTRIBUTES FOR VIDEO IN THE DATASET LEVEL 2

There are 31 attributes used to make the sets



Headwear

10 items: caps, berets, hats, caps



Hoodie

5 items: hoodies in different colors



Scarves

6 items: scarves and stoles in different colors



Correction glasses

4 items: different models of glasses with clear lenses



Sunglasses

4 items: different models of glasses with dark lenses



Medical Masks

2 items: different type of respiratory masks